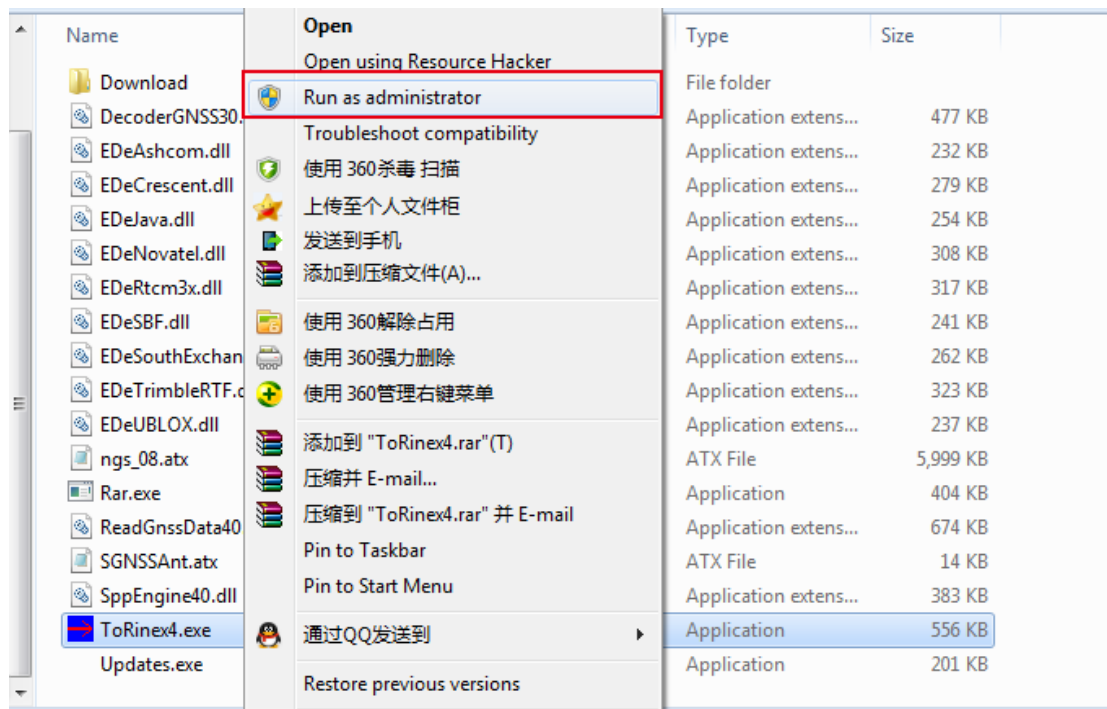
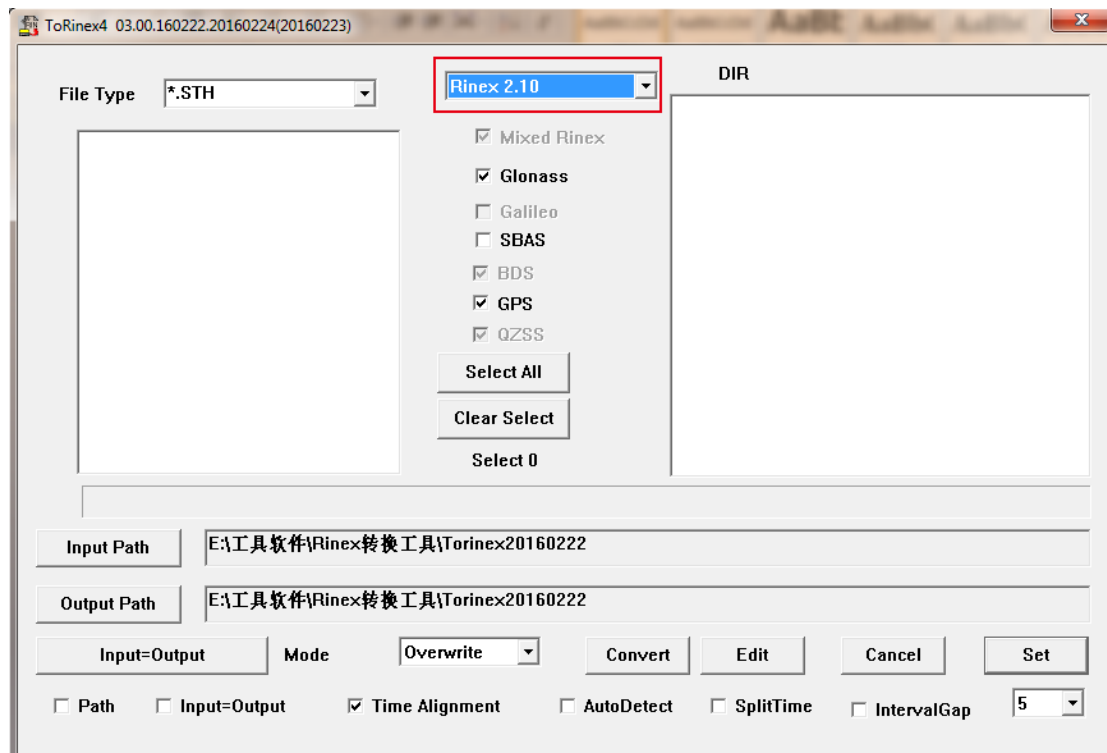


Operation manual on ToRinex

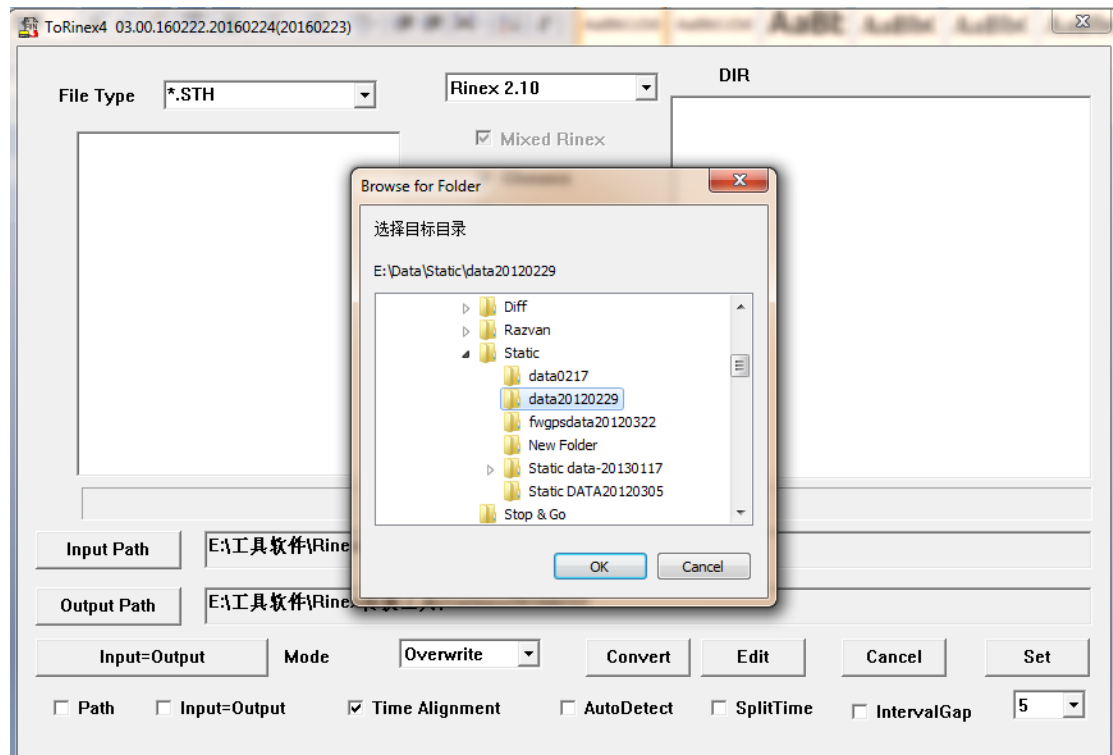
1. Right click on ToRinex4.exe and run the program as administrator



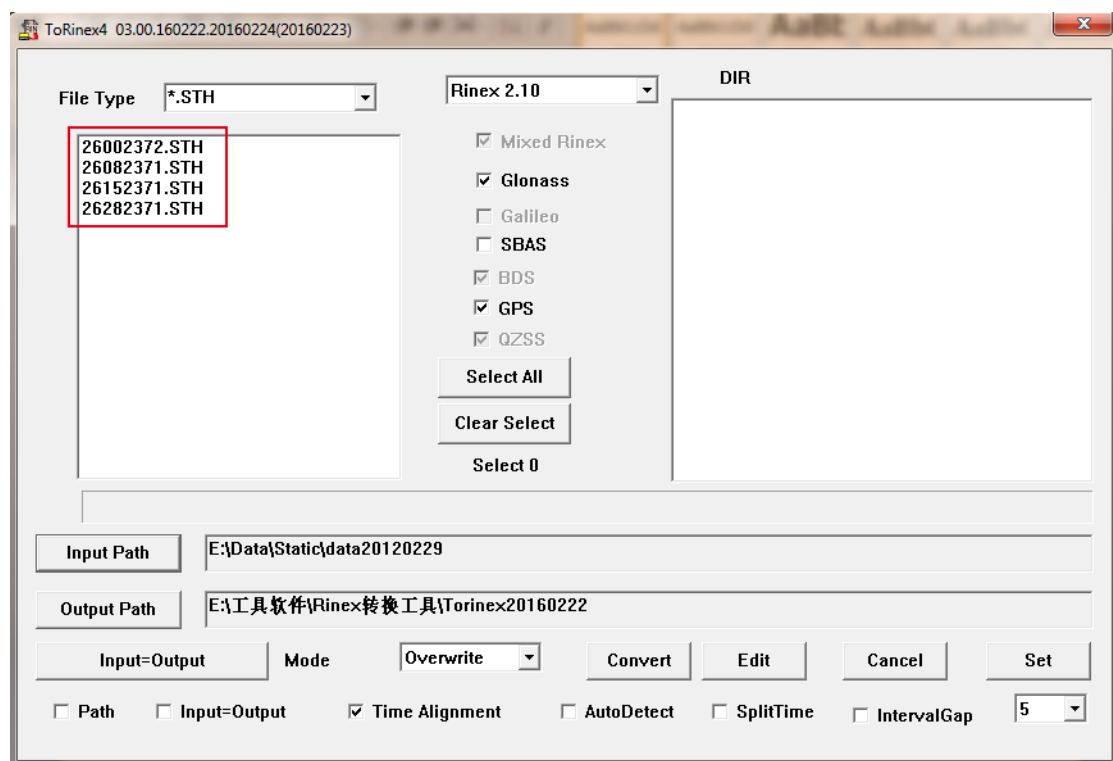
2. Then make sure what version of Rinex file for your use. Usually, we choose Rinex 2.10, this is the common used Rinex version.



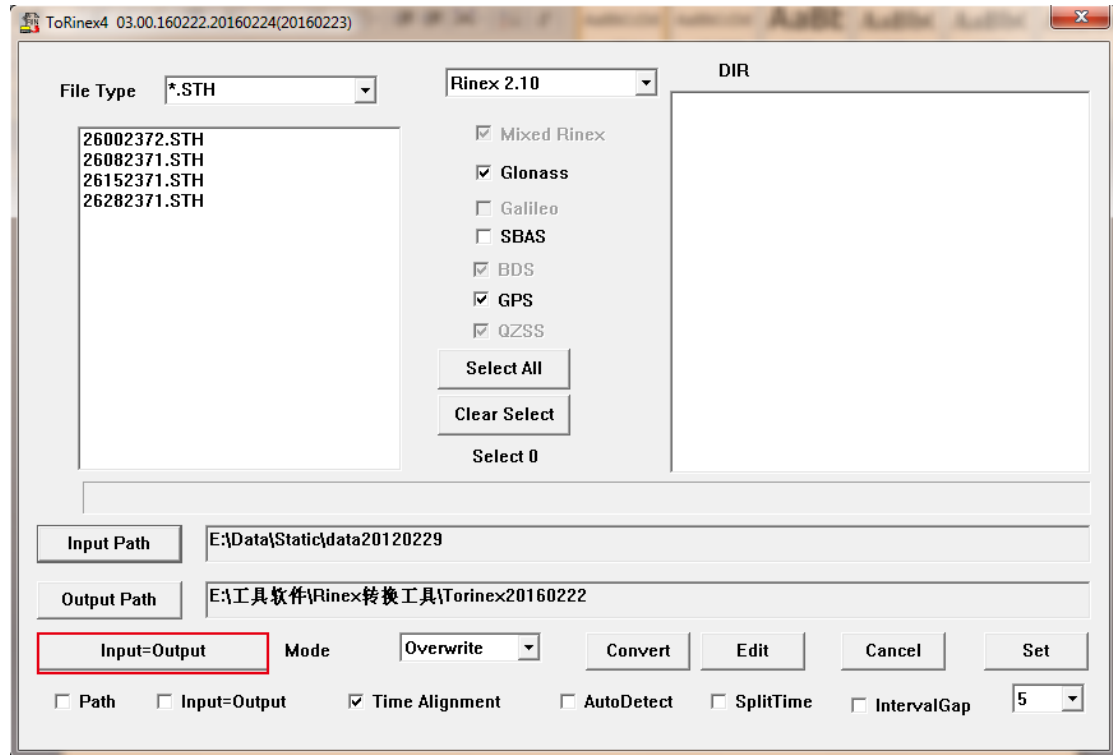
3. Click on **Input Path** button to find where the static data is stored and load the data to program.



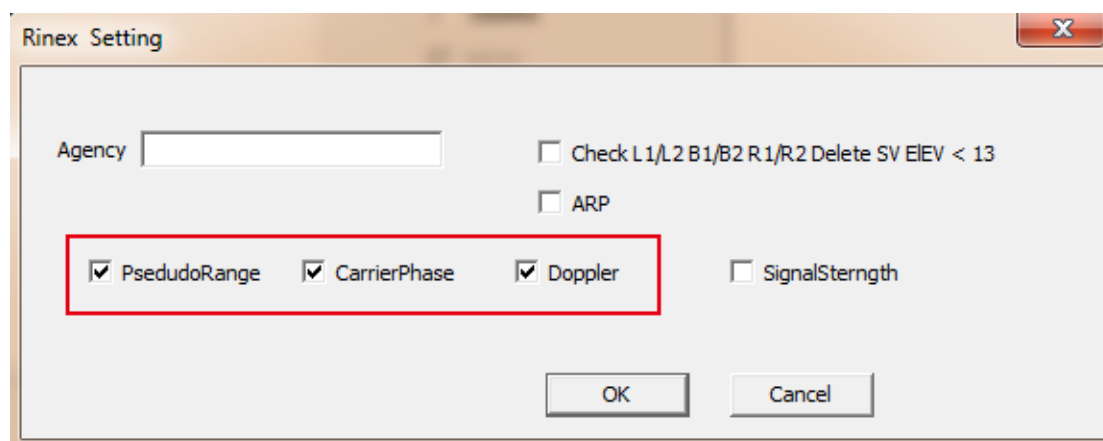
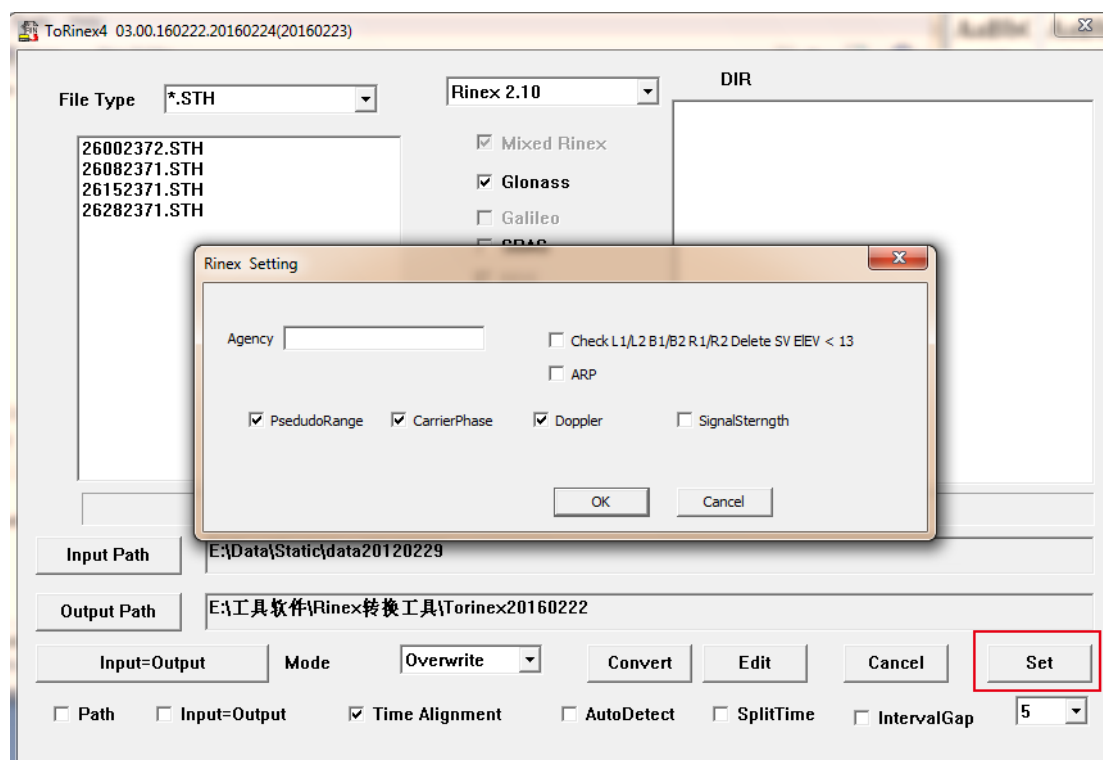
4. After you choose the folder which stores the static data files, click on OK and the data files will be loaded to the window at the left side



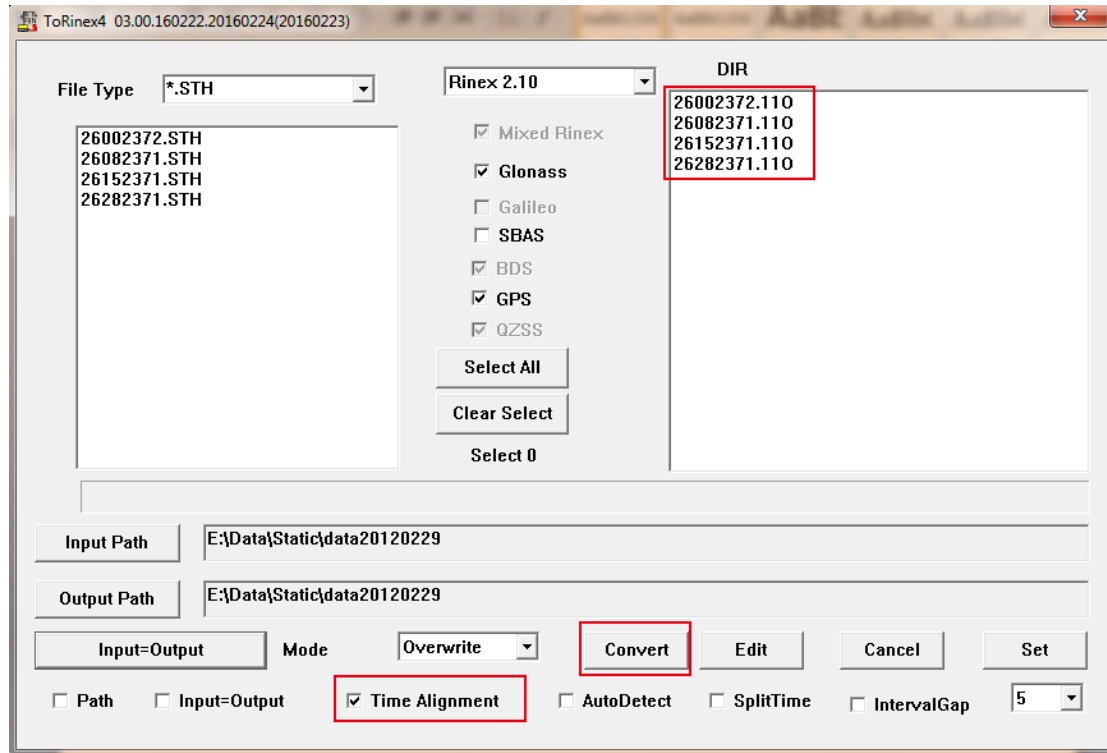
5. Then choose click on **Output Path** to define where to store the Rinex data files after converting. Or click on the **Input=Output** button to define the folder where is same place with sth files stored.



6. Click on **Set** button to set up some parameters for conversion, on the pop-up dialog, check the 3 options (PseudoRange, CarrierPhase, Doppler) as shown at following screenshot. Then click on OK button to confirm all the settings.



7. Finally, check the option Time Alignment, and then click on the STH files to choose which one you are going to convert, or click on select all button to choose all the sth files for conversion, convert button to perform the conversion, after that, the Rinex files will be displayed at the window at the right side.



8. At this moment, you can go to the folder to check all the Rinex files.

